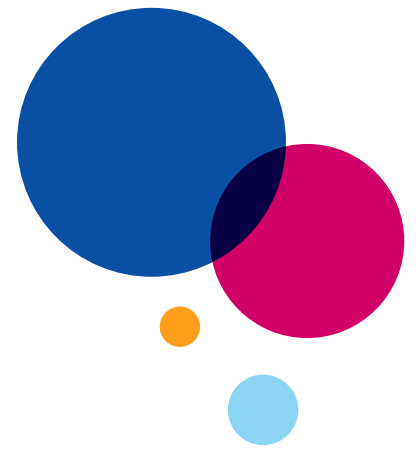


# ‘Smooth everyday life’ discussion



When the work goes well, the employer’s and personal assistant’s day-to-day life will also go well. This requires that you and your employer have a mutual understanding about the tasks and about the conduct expected at the workplace.

That, in turn, calls for open and clear interaction, trust and joint reflection and problem-solving skills.

Trust does not develop or deepen by itself but instead demands concrete actions. One of the most important tools for this is good dialogue. That is why dialogue skills should be a priority.

To support dialogue between the employer and assistant, we have created a ‘Smooth everyday life’ discussion template, which you can download as a file or print up as a 2-sided sheet.

The ‘Smooth everyday life’ discussion can help clarify what has been agreed on about the work. A discussion on how the work and co-operation are going can also be held.

The discussion template should be used regularly in order to retain trust and an understanding of both parties’ expectations in the employment relationship. The discussion template can also be used when the employer faces challenges in interacting with you in day-to-day life.